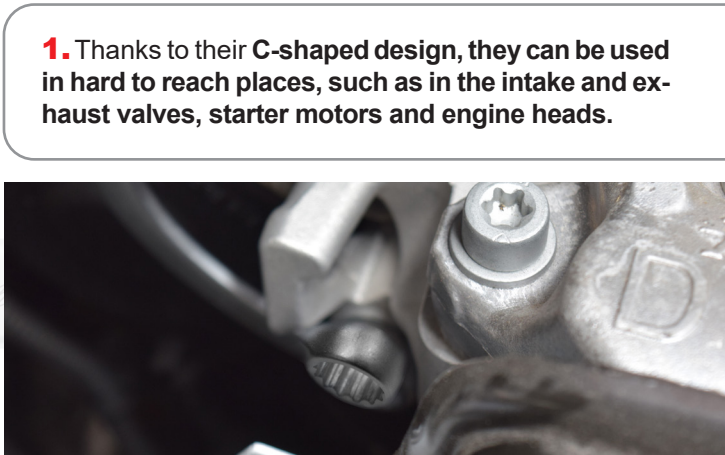


HALF MOON RING SPANNERS



EGA Master Half Moon Ring Spanners are **ideal**, thanks to their shape, to operate with nuts where conventional spanner is inaccessible.



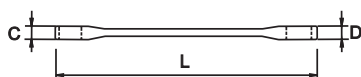
1. Thanks to their C-shaped design, they can be used in hard to reach places, such as in the intake and exhaust valves, starter motors and engine heads.

2. The configuration of the ring is 12 edges.

3. Manufactured from **chrome-vanadium** steel, this wrench is designed to support high torque values without breaking, providing increased durability.

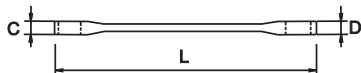
4. Manufactured according to **DIN 475** standard.

HALF MOON RING SPANNERS MM



COD.	AF mm	L (mm)	A (mm)	B (mm)	C (mm)	D (mm)	g		
57158	6-8								
57155	7-9	135	15	19	8	8	55		
57159	8-10								
57156	10-12	150	20	22	9	9	90		
60795	11-13			23					
57160	13-15	175					110		
60796	13-17						120	10	• B
57161	14-16	185	25	28	10	10	160		
60797	14-17								
57162	17-19	210	28	31	11	11	180		
57157	18-20								
60798	19-22	230	31	35	12	12	280		
57163	21-22		32				300		

HALF MOON RING SPANNERS INCHES



COD.	L (mm)	AF inch	A (mm)	B (mm)	C (mm)	D (mm)	g		
57148	135	1/4- 5/16	15	19	8,0	8,0	55	10	●
57149		5/16- 3/8							
57150	155	7/16- 1/2	20	23	9,0	9,0	90		
57151	185	9/16- 5/8	25	28	10	10	160		
57152	210	11/16- 3/4	28	31	11	11	210		
57153	230	13/16- 7/8	32	35	12	12	300		

TECHNICAL SPECIFICATIONS

MATERIAL	Cr-V
HARDNESS	44-50 HRc
FINISHING	Aerospatial chrome plating

